

archexteriors

2019



Have you ever wanted to make professional exterior renderings? Do you know how to use V-RaySun, V-RaySky and V-RayPhysicalCamera? Have you ever had problems with composition? Archexteriors will end all your problems. Take a look at this fully textured scenes with professional shaders and lighting ready to render. Get your own portfolio and join cg market.



AE33_001



Software and models © 2019 EVERMOTION. EVERMOTION logo is trademark or registered trademark of Evermotion Inc. in the U.S. and/or other countries. All rights reserved. All *.max, *.obj, *.fbx and bitmaps models included on this collection with data are an integral part of „archexteriors vol.33” and the resale of this data is strictly prohibited. All models can be used for commercial purposes only by owners who bought this collection. The sharing of collection is strictly prohibited unless that user has written authorization from EVERMOTION.

archexteriors

2019



Have you ever wanted to make professional exterior renderings? Do you know how to use V-RaySun, V-RaySky and V-RayPhysicalCamera? Have you ever had problems with composition? Archexteriors will end all your problems. Take a look at this fully textured scenes with professional shaders and lighting ready to render. Get your own portfolio and join cg market.



AE33_002

Software and models © 2019 EVERMOTION. EVERMOTION logo is trademark or registered trademark of Evermotion Inc. in the U.S. and/or other countries. All rights reserved. All *.max, *.obj, *.fbx and bitmaps models included on this collection with data are an integral part of „archexteriors vol.33” and the resale of this data is strictly prohibited. All models can be used for commercial purposes only by owners who bought this collection. The sharing of collection is strictly prohibited unless that user has written authorization from EVERMOTION.

archexteriors

2019



Have you ever wanted to make professional exterior renderings? Do you know how to use V-RaySun, V-RaySky and V-RayPhysicalCamera? Have you ever had problems with composition? Archexteriors will end all your problems. Take a look at this fully textured scenes with professional shaders and lighting ready to render. Get your own portfolio and join cg market.



AE3_003



Software and models © 2019 EVERMOTION. EVERMOTION logo is trademark or registered trademark of Evermotion Inc. in the U.S. and/or other countries. All rights reserved. All *.max, *.obj, *.fbx and bitmaps models included on this collection with data are an integral part of „archexteriors vol.33” and the resale of this data is strictly prohibited. All models can be used for commercial purposes only by owners who bought this collection. The sharing of collection is strictly prohibited unless that user has written authorization from EVERMOTION.

archexteriors

2019



Have you ever wanted to make professional exterior renderings? Do you know how to use V-RaySun, V-RaySky and V-RayPhysicalCamera? Have you ever had problems with composition? Archexteriors will end all your problems. Take a look at this fully textured scenes with professional shaders and lighting ready to render. Get your own portfolio and join cg market.



AE33_004

Software and models © 2019 EVERMOTION. EVERMOTION logo is trademark or registered trademark of Evermotion Inc. in the U.S. and/or other countries. All rights reserved. All *.max, *.obj, *.fbx and bitmaps models included on this collection with data are an integral part of „archexteriors vol.33” and the resale of this data is strictly prohibited. All models can be used for commercial purposes only by owners who bought this collection. The sharing of collection is strictly prohibited unless that user has written authorization from EVERMOTION.

archexteriors

2019



Have you ever wanted to make professional exterior renderings? Do you know how to use V-RaySun, V-RaySky and V-RayPhysicalCamera? Have you ever had problems with composition? Archexteriors will end all your problems. Take a look at this fully textured scenes with professional shaders and lighting ready to render. Get your own portfolio and join cg market.



AE33_005



Software and models © 2019 EVERMOTION. EVERMOTION logo is trademark or registered trademark of Evermotion Inc. in the U.S. and/or other countries. All rights reserved. All *.max, *.obj, *.fbx and bitmaps models included on this collection with data are an integral part of „archexteriors vol.33” and the resale of this data is strictly prohibited. All models can be used for commercial purposes only by owners who bought this collection. The sharing of collection is strictly prohibited unless that user has written authorization from EVERMOTION.

archexteriors

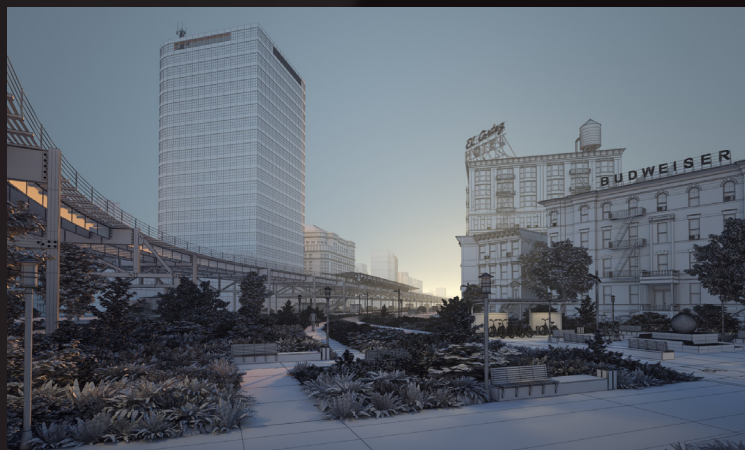
2019



Have you ever wanted to make professional exterior renderings? Do you know how to use V-RaySun, V-RaySky and V-RayPhysicalCamera? Have you ever had problems with composition? Archexteriors will end all your problems. Take a look at this fully textured scenes with professional shaders and lighting ready to render. Get your own portfolio and join cg market.



AE33_006



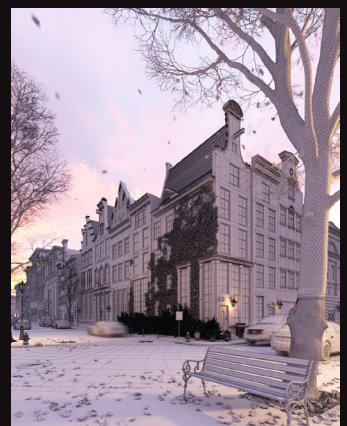
Software and models © 2019 EVERMOTION. EVERMOTION logo is trademark or registered trademark of Evermotion Inc. in the U.S. and/or other countries. All rights reserved. All *.max, *.obj, *.fbx and bitmaps models included on this collection with data are an integral part of „archexteriors vol.33” and the resale of this data is strictly prohibited. All models can be used for commercial purposes only by owners who bought this collection. The sharing of collection is strictly prohibited unless that user has written authorization from EVERMOTION.

archexteriors

2019



Have you ever wanted to make professional exterior renderings? Do you know how to use V-RaySun, V-RaySky and V-RayPhysicalCamera? Have you ever had problems with composition? Archexteriors will end all your problems. Take a look at this fully textured scenes with professional shaders and lighting ready to render. Get your own portfolio and join cg market.



AE33_007

archexteriors

2019



Have you ever wanted to make professional exterior renderings? Do you know how to use V-RaySun, V-RaySky and V-RayPhysicalCamera? Have you ever had problems with composition? Archexteriors will end all your problems. Take a look at this fully textured scenes with professional shaders and lighting ready to render. Get your own portfolio and join cg market.



AE33_008



Software and models © 2019 EVERMOTION. EVERMOTION logo is trademark or registered trademark of Evermotion Inc. in the U.S. and/or other countries. All rights reserved. All *.max, *.obj, *.fbx and bitmaps models included on this collection with data are an integral part of „archexteriors vol.33” and the resale of this data is strictly prohibited. All models can be used for commercial purposes only by owners who bought this collection. The sharing of collection is strictly prohibited unless that user has written authorization from EVERMOTION.

archexteriors

2019



Have you ever wanted to make professional exterior renderings? Do you know how to use V-RaySun, V-RaySky and V-RayPhysicalCamera? Have you ever had problems with composition? Archexteriors will end all your problems. Take a look at this fully textured scenes with professional shaders and lighting ready to render. Get your own portfolio and join cg market.



AE33_009



Software and models © 2019 EVERMOTION. EVERMOTION logo is trademark or registered trademark of Evermotion Inc. in the U.S. and/or other countries. All rights reserved. All *.max, *.obj, *.fbx and bitmaps models included on this collection with data are an integral part of „archexteriors vol.33” and the resale of this data is strictly prohibited. All models can be used for commercial purposes only by owners who bought this collection. The sharing of collection is strictly prohibited unless that user has written authorization from EVERMOTION.

archexteriors

2019



Have you ever wanted to make professional exterior renderings? Do you know how to use V-RaySun, V-RaySky and V-RayPhysicalCamera? Have you ever had problems with composition? Archexteriors will end all your problems. Take a look at this fully textured scenes with professional shaders and lighting ready to render. Get your own portfolio and join cg market.



AE33_010



Software and models © 2019 EVERMOTION. EVERMOTION logo is trademark or registered trademark of Evermotion Inc. in the U.S. and/or other countries. All rights reserved. All *.max, *.obj, *.fbx and bitmaps models included on this collection with data are an integral part of „archexteriors vol.33” and the resale of this data is strictly prohibited. All models can be used for commercial purposes only by owners who bought this collection. The sharing of collection is strictly prohibited unless that user has written authorization from EVERMOTION.