

# archexteriors

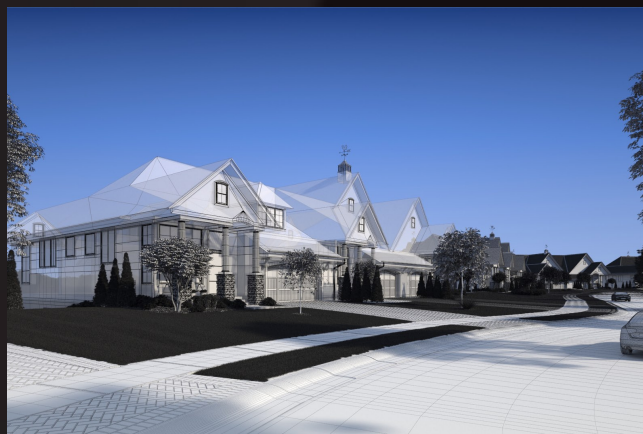
2014



Have you ever wanted to make professional exterior renderings? Do you know how to use V-RaySun, V-RaySky and V-RayPhysicalCamera? Have you ever had problems with composition? Archexteriors will end all your problems. Take a look at this 10 fully textured scenes with professional shaders and lighting ready to render. Get your own portfolio and join cg market.



scene 01 render



scene 01 wire

Software and models © 2014 EVERMOTION. EVERMOTION logo is trademark or registered trademark of Evermotion Inc. in the U.S. and/or other countries. All rights reserved. All \*.max and bitmaps models included on this collection with data are an integral part of „archexteriors vol.24” and the resale of this data is strictly prohibited. All models can be used for commercial purposes only by owners who bought this collection. The sharing of collection data is strictly prohibited unless that user has written authorization from EVERMOTION.



# archexteriors

2014



Have you ever wanted to make professional exterior renderings? Do you know how to use V-RaySun, V-RaySky and V-RayPhysicalCamera? Have you ever had problems with composition? Archexteriors will end all your problems. Take a look at this 10 fully textured scenes with professional shaders and lighting ready to render. Get your own portfolio and join cg market.



scene 02 render



scene 02 wire

Software and models © 2014 EVERMOTION. EVERMOTION logo is trademark or registered trademark of Evermotion Inc. in the U.S. and/or other countries. All rights reserved. All \*.max and bitmaps models included on this collection with data are an integral part of „archexteriors vol.24” and the resale of this data is strictly prohibited. All models can be used for commercial purposes only by owners who bought this collection. The sharing of collection data is strictly prohibited unless that user has written authorization from EVERMOTION.



# archexteriors

2014



Have you ever wanted to make professional exterior renderings? Do you know how to use V-RaySun, V-RaySky and V-RayPhysicalCamera? Have you ever had problems with composition? Archexteriors will end all your problems. Take a look at this 10 fully textured scenes with professional shaders and lighting ready to render. Get your own portfolio and join cg market.



scene 03 render



scene 03 wire

Software and models © 2014 EVERMOTION. EVERMOTION logo is trademark or registered trademark of Evermotion Inc. in the U.S. and/or other countries. All rights reserved. All \*.max and bitmaps models included on this collection with data are an integral part of „archexteriors vol.24” and the resale of this data is strictly prohibited. All models can be used for commercial purposes only by owners who bought this collection. The sharing of collection data is strictly prohibited unless that user has written authorization from EVERMOTION.



# archexteriors

2014



Have you ever wanted to make professional exterior renderings? Do you know how to use V-RaySun, V-RaySky and V-RayPhysicalCamera? Have you ever had problems with composition? Archexteriors will end all your problems. Take a look at this 10 fully textured scenes with professional shaders and lighting ready to render. Get your own portfolio and join cg market.



scene 04 render



scene 04 wire

Software and models © 2014 EVERMOTION. EVERMOTION logo is trademark or registered trademark of Evermotion Inc. in the U.S. and/or other countries. All rights reserved. All \*.max and bitmaps models included on this collection with data are an integral part of „archexteriors vol.24” and the resale of this data is strictly prohibited. All models can be used for commercial purposes only by owners who bought this collection. The sharing of collection data is strictly prohibited unless that user has written authorization from EVERMOTION.



# archexteriors

2014



Have you ever wanted to make professional exterior renderings? Do you know how to use V-RaySun, V-RaySky and V-RayPhysicalCamera? Have you ever had problems with composition? Archexteriors will end all your problems. Take a look at this 10 fully textured scenes with professional shaders and lighting ready to render. Get your own portfolio and join cg market.



scene 05 render



scene 05 wire

Software and models © 2014 EVERMOTION. EVERMOTION logo is trademark or registered trademark of Evermotion Inc. in the U.S. and/or other countries. All rights reserved. All \*.max and bitmaps models included on this collection with data are an integral part of „archexteriors vol.24” and the resale of this data is strictly prohibited. All models can be used for commercial purposes only by owners who bought this collection. The sharing of collection data is strictly prohibited unless that user has written authorization from EVERMOTION.



# archexteriors

2014



Have you ever wanted to make professional exterior renderings? Do you know how to use V-RaySun, V-RaySky and V-RayPhysicalCamera? Have you ever had problems with composition? Archexteriors will end all your problems. Take a look at this 10 fully textured scenes with professional shaders and lighting ready to render. Get your own portfolio and join cg market.



scene 06 render



scene 06 wire

Software and models © 2014 EVERMOTION. EVERMOTION logo is trademark or registered trademark of Evermotion Inc. in the U.S. and/or other countries. All rights reserved. All \*.max and bitmaps models included on this collection with data are an integral part of „archexteriors vol.24” and the resale of this data is strictly prohibited. All models can be used for commercial purposes only by owners who bought this collection. The sharing of collection data is strictly prohibited unless that user has written authorization from EVERMOTION.



# archexteriors

2014



Have you ever wanted to make professional exterior renderings? Do you know how to use V-RaySun, V-RaySky and V-RayPhysicalCamera? Have you ever had problems with composition? Archexteriors will end all your problems. Take a look at this 10 fully textured scenes with professional shaders and lighting ready to render. Get your own portfolio and join cg market.



scene 07 render



scene 07 wire

Software and models © 2014 EVERMOTION. EVERMOTION logo is trademark or registered trademark of Evermotion Inc. in the U.S. and/or other countries. All rights reserved. All \*.max and bitmaps models included on this collection with data are an integral part of „archexteriors vol.24” and the resale of this data is strictly prohibited. All models can be used for commercial purposes only by owners who bought this collection. The sharing of collection data is strictly prohibited unless that user has written authorization from EVERMOTION.



# archexteriors

2014



Have you ever wanted to make professional exterior renderings? Do you know how to use V-RaySun, V-RaySky and V-RayPhysicalCamera? Have you ever had problems with composition? Archexteriors will end all your problems. Take a look at this 10 fully textured scenes with professional shaders and lighting ready to render. Get your own portfolio and join cg market.



scene 08 render



scene 08 wire

Software and models © 2014 EVERMOTION. EVERMOTION logo is trademark or registered trademark of Evermotion Inc. in the U.S. and/or other countries. All rights reserved. All \*.max and bitmaps models included on this collection with data are an integral part of „archexteriors vol.24” and the resale of this data is strictly prohibited. All models can be used for commercial purposes only by owners who bought this collection. The sharing of collection data is strictly prohibited unless that user has written authorization from EVERMOTION.



# archexteriors

2014



Have you ever wanted to make professional exterior renderings? Do you know how to use V-RaySun, V-RaySky and V-RayPhysicalCamera? Have you ever had problems with composition? Archexteriors will end all your problems. Take a look at this 10 fully textured scenes with professional shaders and lighting ready to render. Get your own portfolio and join cg market.



scene 09 render



scene 09 wire

Software and models © 2014 EVERMOTION. EVERMOTION logo is trademark or registered trademark of Evermotion Inc. in the U.S. and/or other countries. All rights reserved. All \*.max and bitmaps models included on this collection with data are an integral part of „archexteriors vol.24” and the resale of this data is strictly prohibited. All models can be used for commercial purposes only by owners who bought this collection. The sharing of collection data is strictly prohibited unless that user has written authorization from EVERMOTION.



# archexteriors

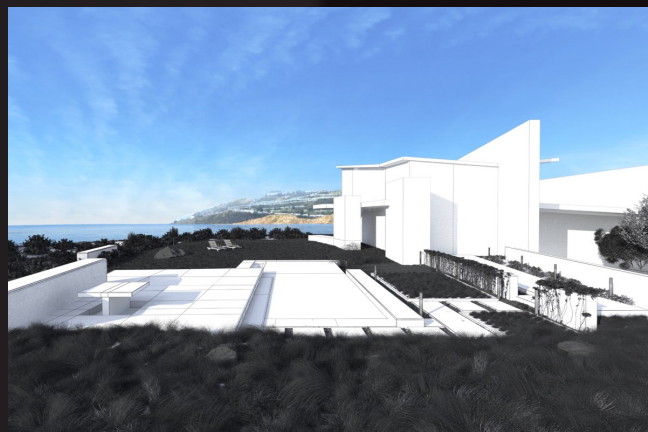
2014



Have you ever wanted to make professional exterior renderings? Do you know how to use V-RaySun, V-RaySky and V-RayPhysicalCamera? Have you ever had problems with composition? Archexteriors will end all your problems. Take a look at this 10 fully textured scenes with professional shaders and lighting ready to render. Get your own portfolio and join cg market.



scene 10 render



scene 10 wire

Software and models © 2014 EVERMOTION. EVERMOTION logo is trademark or registered trademark of Evermotion Inc. in the U.S. and/or other countries. All rights reserved. All \*.max and bitmaps models included on this collection with data are an integral part of „archexteriors vol.24” and the resale of this data is strictly prohibited. All models can be used for commercial purposes only by owners who bought this collection. The sharing of collection data is strictly prohibited unless that user has written authorization from EVERMOTION.