

archexteriors

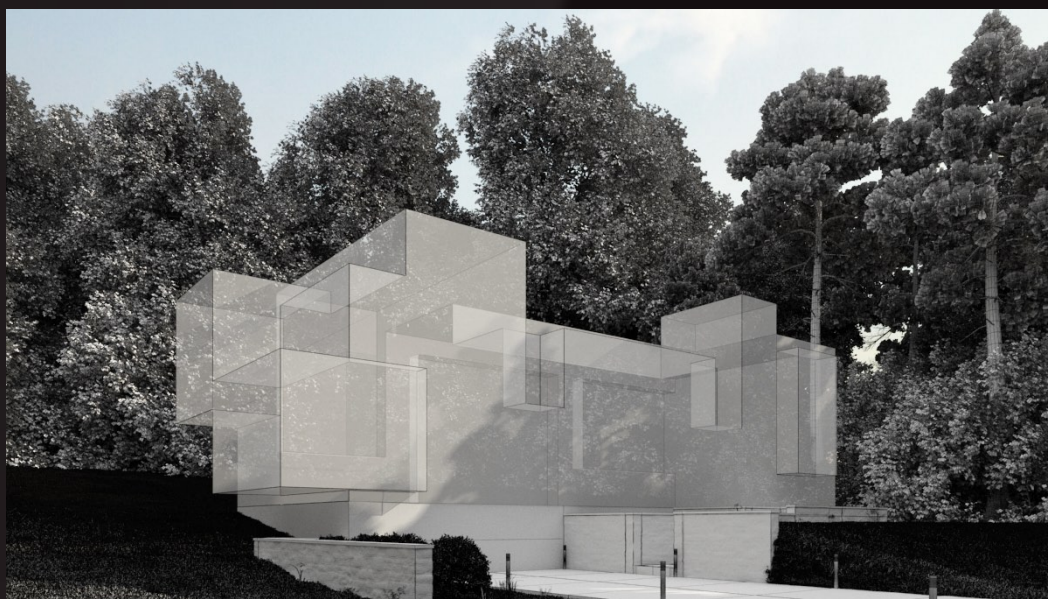
2013



Have you ever wanted to make professional exterior renderings? Do you know how to use V-RaySun, V-RaySky and V-RayPhysicalCamera? Have you ever had problems with composition? Archexteriors will end all your problems. Take a look at this 10 fully textured scenes with professional shaders and lighting ready to render. Get your own portfolio and join cg market.



scene 01 camera 1



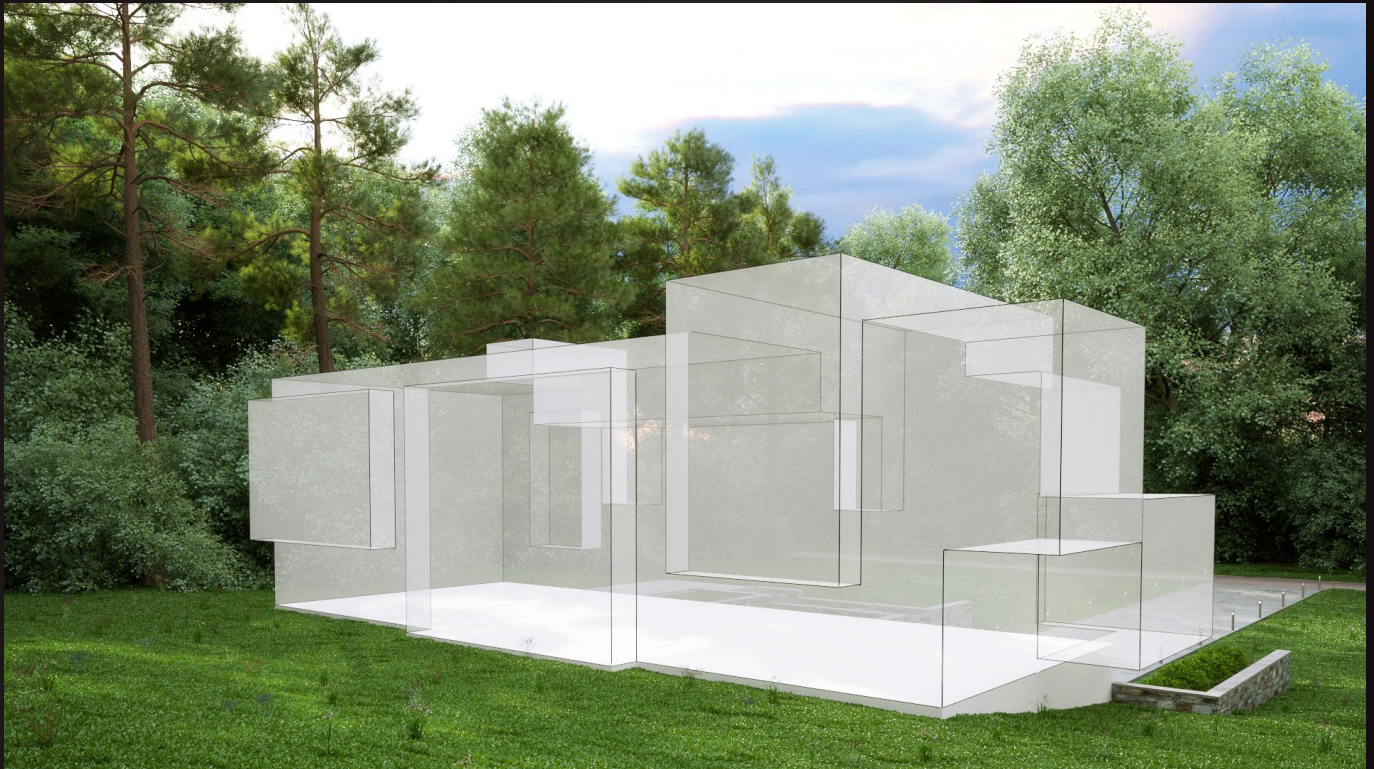
Software and models © 2013 EVERMOTION. EVERMOTION logo is trademark or registered trademark of Evermotion Inc. in the U.S. and/or other countries. All rights reserved. All *.max and bitmaps models included on this DVDROM with data are an integral part of „archexteriors vol.18” and the resale of this data is strictly prohibited. All models can be used for commercial purposes only by owners who bought this DVDROM. The sharing of DVDROM data is strictly prohibited unless that user has written authorizati on from EVERMOTION.

archexteriors

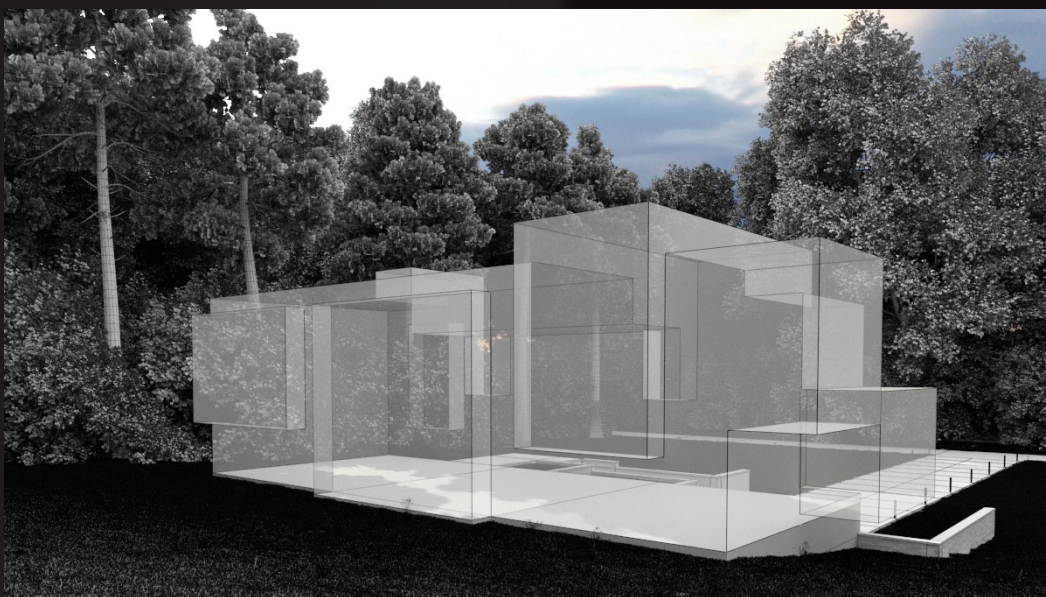
2013



Have you ever wanted to make professional exterior renderings? Do you know how to use V-RaySun, V-RaySky and V-RayPhysicalCamera? Have you ever had problems with composition? Archexteriors will end all your problems. Take a look at this 10 fully textured scenes with professional shaders and lighting ready to render. Get your own portfolio and join cg market.



scene 01 camera 2



Software and models © 2013 EVERMOTION. EVERMOTION logo is trademark or registered trademark of Evermotion Inc. in the U.S. and/or other countries. All rights reserved. All *.max and bitmaps models included on this DVDROM with data are an integral part of „archexteriors vol.18” and the resale of this data is strictly prohibited. All models can be used for commercial purposes only by owners who bought this DVDROM. The sharing of DVDROM data is strictly prohibited unless that user has written authorizati on from EVERMOTION.

archexteriors

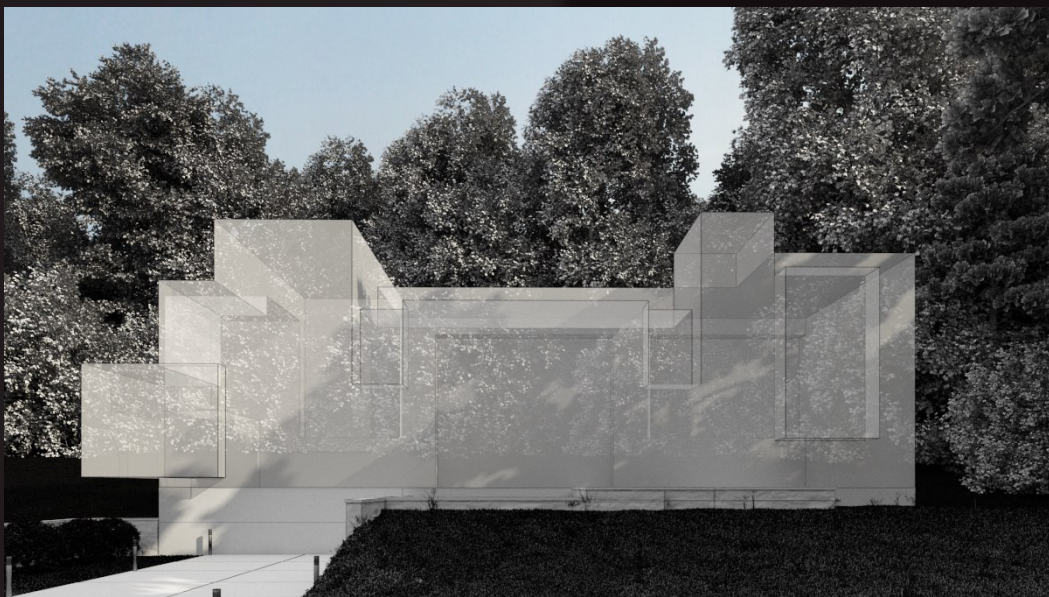
2013



Have you ever wanted to make professional exterior renderings? Do you know how to use V-RaySun, V-RaySky and V-RayPhysicalCamera? Have you ever had problems with composition? Archexteriors will end all your problems. Take a look at this 10 fully textured scenes with professional shaders and lighting ready to render. Get your own portfolio and join cg market.



scene 01 camera 3



Software and models © 2013 EVERMOTION. EVERMOTION logo is trademark or registered trademark of Evermotion Inc. in the U.S. and/or other countries. All rights reserved. All *.max and bitmaps models included on this DVDROM with data are an integral part of „archexteriors vol.18” and the resale of this data is strictly prohibited. All models can be used for commercial purposes only by owners who bought this DVDROM. The sharing of DVDROM data is strictly prohibited unless that user has written authorizati on from EVERMOTION.

archexteriors

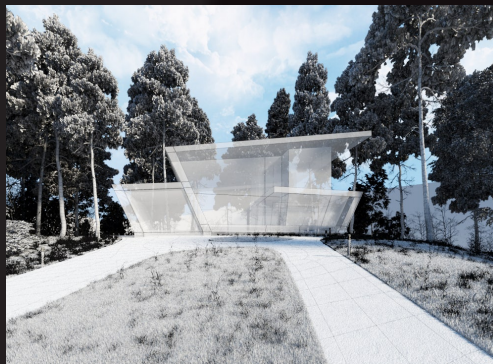
2013



Have you ever wanted to make professional exterior renderings? Do you know how to use V-RaySun, V-RaySky and V-RayPhysicalCamera? Have you ever had problems with composition? Archexteriors will end all your problems. Take a look at this 10 fully textured scenes with professional shaders and lighting ready to render. Get your own portfolio and join cg market.



scene 02 camera 1



Software and models © 2013 EVERMOTION. EVERMOTION logo is trademark or registered trademark of Evermotion Inc. in the U.S. and/or other countries. All rights reserved. All *.max and bitmaps models included on this DVDROM with data are an integral part of „archexteriors vol.18” and the resale of this data is strictly prohibited. All models can be used for commercial purposes only by owners who bought this DVDROM. The sharing of DVDROM data is strictly prohibited unless that user has written authorizati on from EVERMOTION.

archexteriors

2013



Have you ever wanted to make professional exterior renderings? Do you know how to use V-RaySun, V-RaySky and V-RayPhysicalCamera? Have you ever had problems with composition? Archexteriors will end all your problems. Take a look at this 10 fully textured scenes with professional shaders and lighting ready to render. Get your own portfolio and join cg market.



scene 02 camera 2



Software and models © 2013 EVERMOTION. EVERMOTION logo is trademark or registered trademark of Evermotion Inc. in the U.S. and/or other countries. All rights reserved. All *.max and bitmaps models included on this DVDROM with data are an integral part of „archexteriors vol.18” and the resale of this data is strictly prohibited. All models can be used for commercial purposes only by owners who bought this DVDROM. The sharing of DVDROM data is strictly prohibited unless that user has written authorizati on from EVERMOTION.

archexteriors

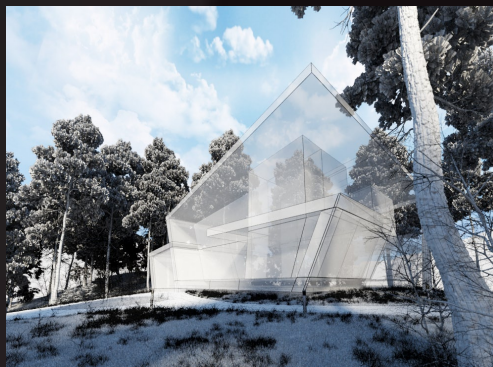
2013



Have you ever wanted to make professional exterior renderings? Do you know how to use V-RaySun, V-RaySky and V-RayPhysicalCamera? Have you ever had problems with composition? Archexteriors will end all your problems. Take a look at this 10 fully textured scenes with professional shaders and lighting ready to render. Get your own portfolio and join cg market.



scene 02 camera 3



Software and models © 2013 EVERMOTION. EVERMOTION logo is trademark or registered trademark of Evermotion Inc. in the U.S. and/or other countries. All rights reserved. All *.max and bitmaps models included on this DVDROM with data are an integral part of „archexteriors vol.18” and the resale of this data is strictly prohibited. All models can be used for commercial purposes only by owners who bought this DVDROM. The sharing of DVDROM data is strictly prohibited unless that user has written authorizati on from EVERMOTION.

archexteriors

2013



Have you ever wanted to make professional exterior renderings? Do you know how to use V-RaySun, V-RaySky and V-RayPhysicalCamera? Have you ever had problems with composition? Archexteriors will end all your problems. Take a look at this 10 fully textured scenes with professional shaders and lighting ready to render. Get your own portfolio and join cg market.



scene 03 camera 1



Software and models © 2013 EVERMOTION. EVERMOTION logo is trademark or registered trademark of Evermotion Inc. in the U.S. and/or other countries. All rights reserved. All *.max and bitmaps models included on this DVDROM with data are an integral part of „archexteriors vol.18” and the resale of this data is strictly prohibited. All models can be used for commercial purposes only by owners who bought this DVDROM. The sharing of DVDROM data is strictly prohibited unless that user has written authorizati on from EVERMOTION.

archexteriors

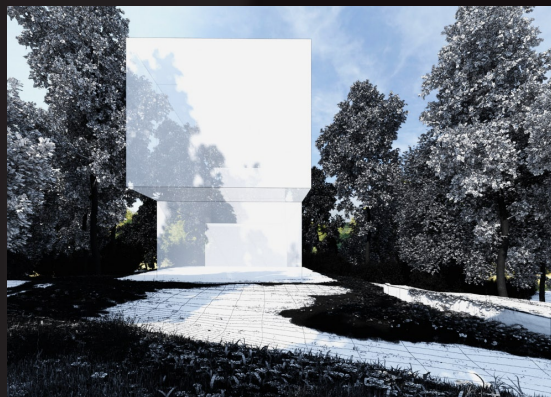
2013



Have you ever wanted to make professional exterior renderings? Do you know how to use V-RaySun, V-RaySky and V-RayPhysicalCamera? Have you ever had problems with composition? Archexteriors will end all your problems. Take a look at this 10 fully textured scenes with professional shaders and lighting ready to render. Get your own portfolio and join cg market.



scene 03 camera 2



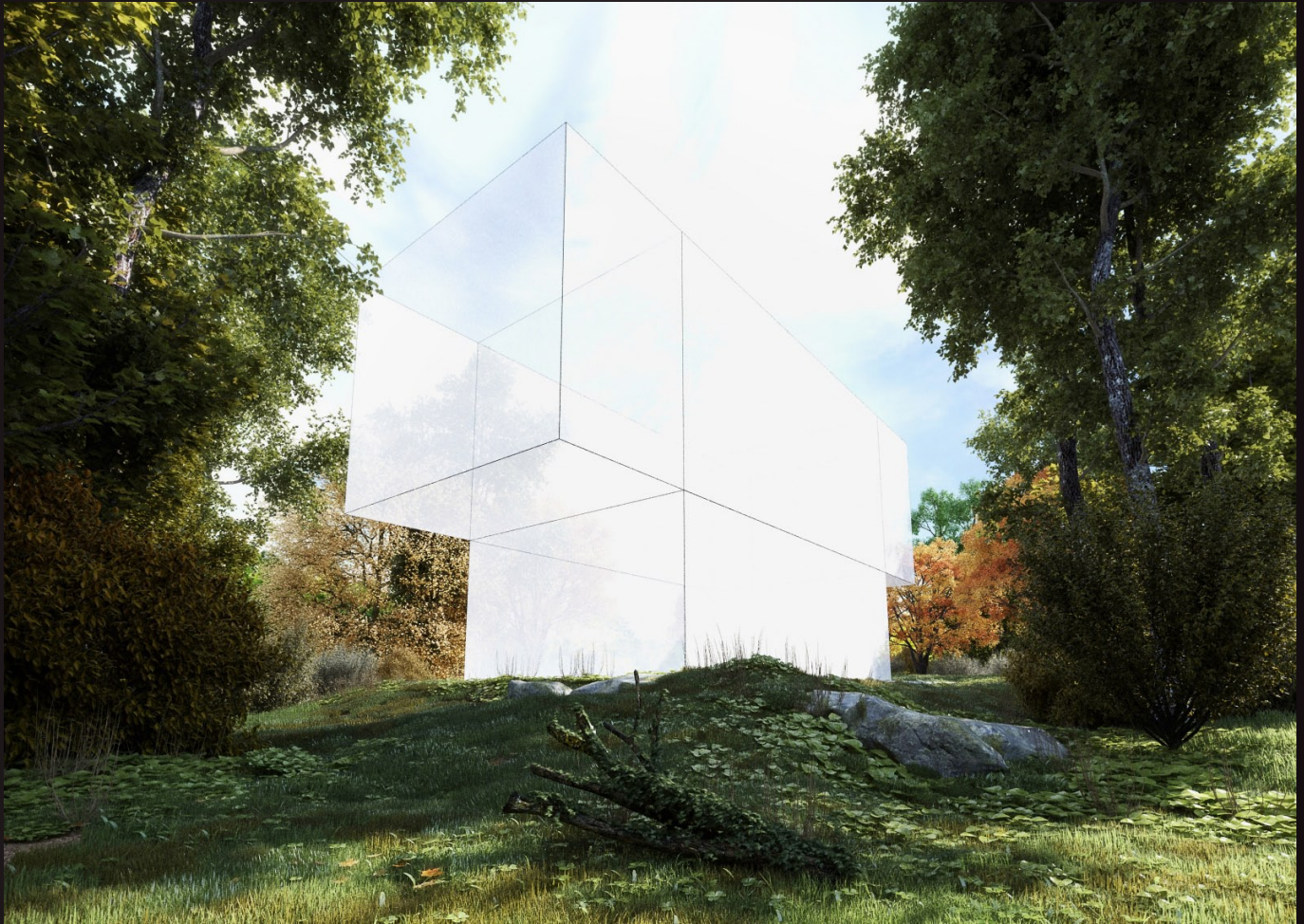
Software and models © 2013 EVERMOTION. EVERMOTION logo is trademark or registered trademark of Evermotion Inc. in the U.S. and/or other countries. All rights reserved. All *.max and bitmaps models included on this DVDROM with data are an integral part of „archexteriors vol.18” and the resale of this data is strictly prohibited. All models can be used for commercial purposes only by owners who bought this DVDROM. The sharing of DVDROM data is strictly prohibited unless that user has written authorizati on from EVERMOTION.

archexteriors

2013



Have you ever wanted to make professional exterior renderings? Do you know how to use V-RaySun, V-RaySky and V-RayPhysicalCamera? Have you ever had problems with composition? Archexteriors will end all your problems. Take a look at this 10 fully textured scenes with professional shaders and lighting ready to render. Get your own portfolio and join cg market.



scene 03 camera 3



Software and models © 2013 EVERMOTION. EVERMOTION logo is trademark or registered trademark of Evermotion Inc. in the U.S. and/or other countries. All rights reserved. All *.max and bitmaps models included on this DVDROM with data are an integral part of „archexteriors vol.18” and the resale of this data is strictly prohibited. All models can be used for commercial purposes only by owners who bought this DVDROM. The sharing of DVDROM data is strictly prohibited unless that user has written authorizati on from EVERMOTION.

archexteriors

2013



Have you ever wanted to make professional exterior renderings? Do you know how to use V-RaySun, V-RaySky and V-RayPhysicalCamera? Have you ever had problems with composition? Archexteriors will end all your problems. Take a look at this 10 fully textured scenes with professional shaders and lighting ready to render. Get your own portfolio and join cg market.



scene 04 camera 1



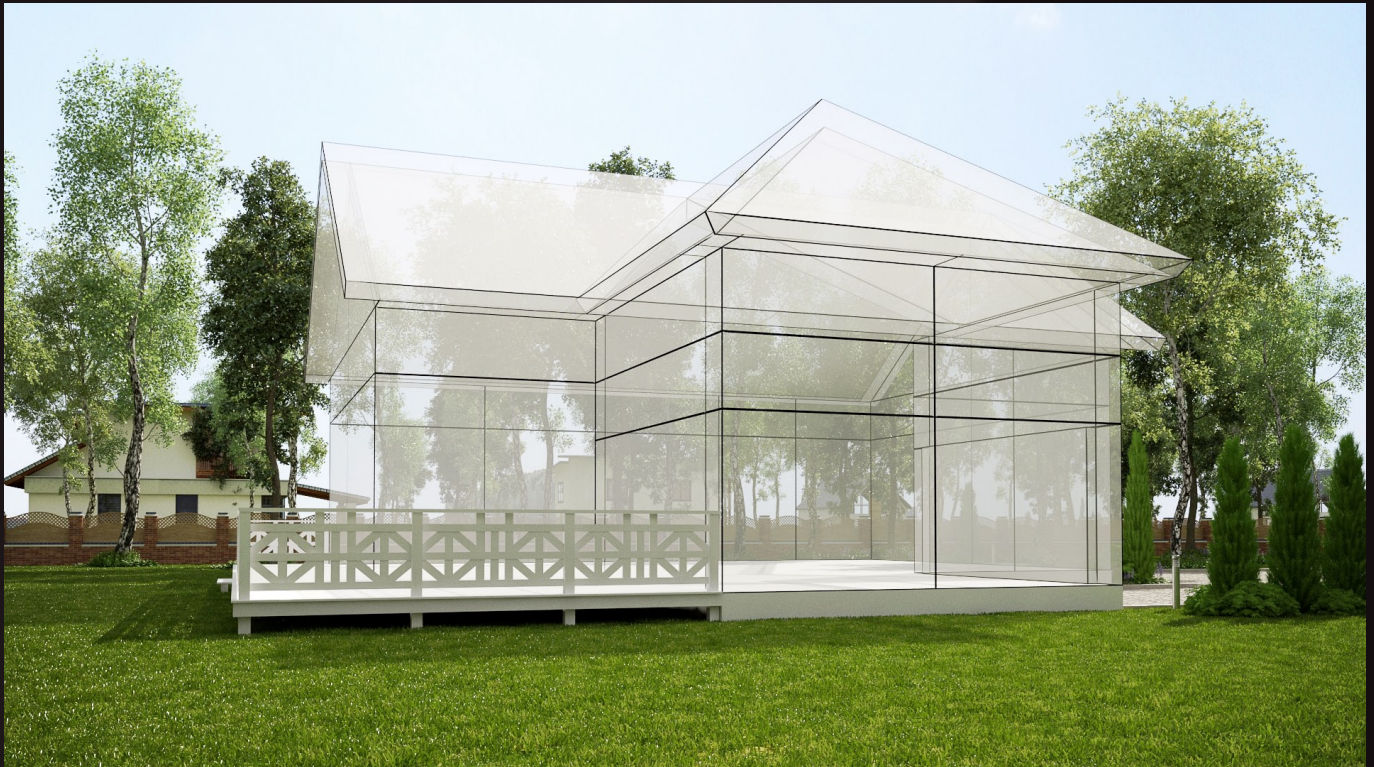
Software and models © 2013 EVERMOTION. EVERMOTION logo is trademark or registered trademark of Evermotion Inc. in the U.S. and/or other countries. All rights reserved. All *.max and bitmaps models included on this DVDROM with data are an integral part of „archexteriors vol.18” and the resale of this data is strictly prohibited. All models can be used for commercial purposes only by owners who bought this DVDROM. The sharing of DVDROM data is strictly prohibited unless that user has written authorizati on from EVERMOTION.

archexteriors

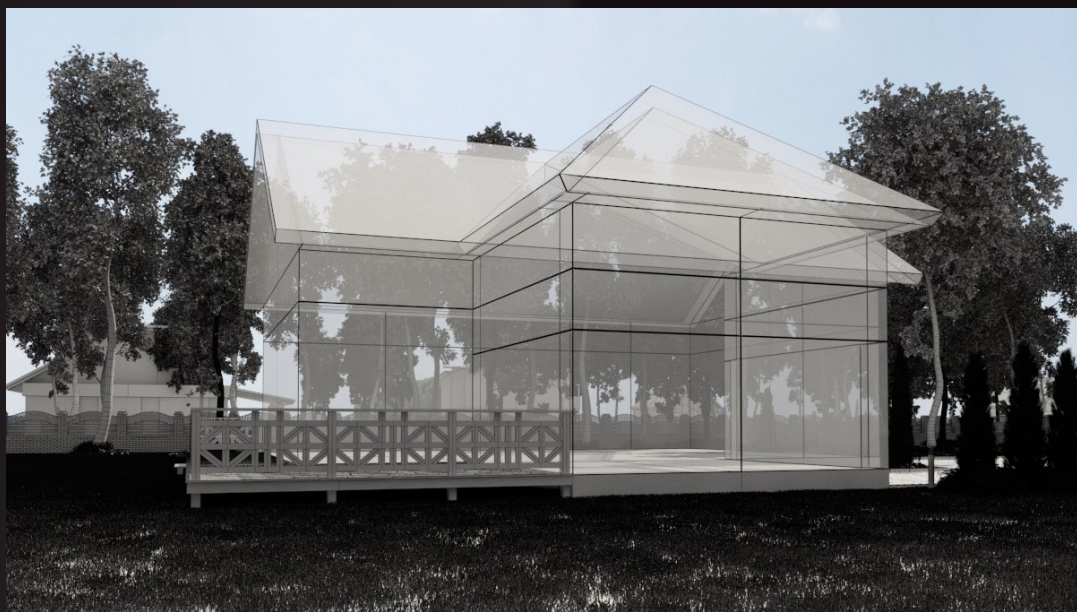
2013



Have you ever wanted to make professional exterior renderings? Do you know how to use V-RaySun, V-RaySky and V-RayPhysicalCamera? Have you ever had problems with composition? Archexteriors will end all your problems. Take a look at this 10 fully textured scenes with professional shaders and lighting ready to render. Get your own portfolio and join cg market.



scene 04 camera 2



Software and models © 2013 EVERMOTION. EVERMOTION logo is trademark or registered trademark of Evermotion Inc. in the U.S. and/or other countries. All rights reserved. All *.max and bitmaps models included on this DVDROM with data are an integral part of „archexteriors vol.18” and the resale of this data is strictly prohibited. All models can be used for commercial purposes only by owners who bought this DVDROM. The sharing of DVDROM data is strictly prohibited unless that user has written authorizati on from EVERMOTION.

archexteriors

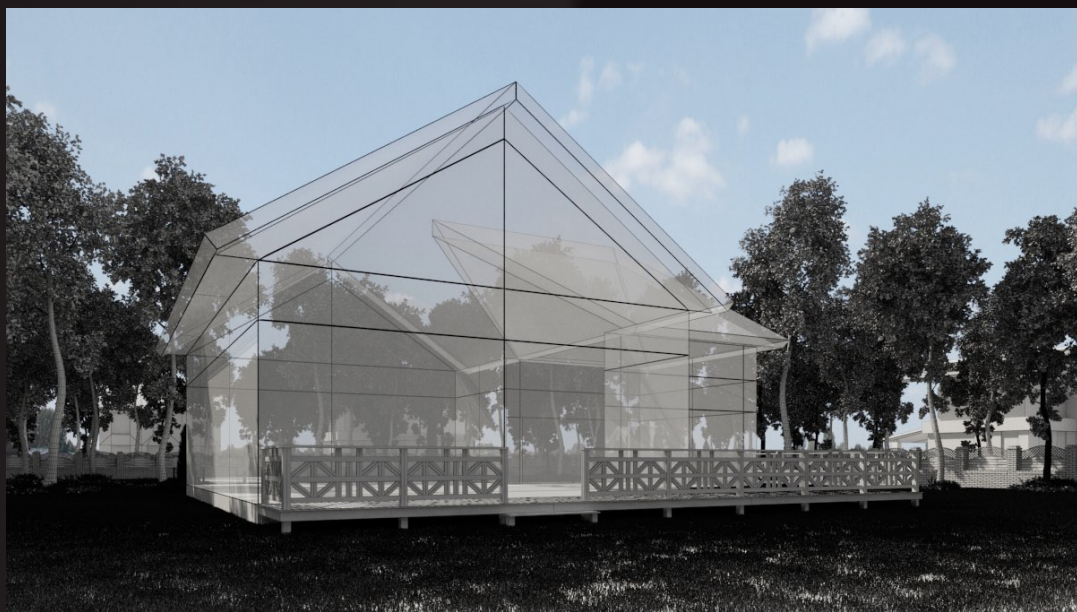
2013



Have you ever wanted to make professional exterior renderings? Do you know how to use V-RaySun, V-RaySky and V-RayPhysicalCamera? Have you ever had problems with composition? Archexteriors will end all your problems. Take a look at this 10 fully textured scenes with professional shaders and lighting ready to render. Get your own portfolio and join cg market.



scene 04 camera 3



Software and models © 2013 EVERMOTION. EVERMOTION logo is trademark or registered trademark of Evermotion Inc. in the U.S. and/or other countries. All rights reserved. All *.max and bitmaps models included on this DVDROM with data are an integral part of „archexteriors vol.18” and the resale of this data is strictly prohibited. All models can be used for commercial purposes only by owners who bought this DVDROM. The sharing of DVDROM data is strictly prohibited unless that user has written authorization from EVERMOTION.

archexteriors

2013



Have you ever wanted to make professional exterior renderings? Do you know how to use V-RaySun, V-RaySky and V-RayPhysicalCamera? Have you ever had problems with composition? Archexteriors will end all your problems. Take a look at this 10 fully textured scenes with professional shaders and lighting ready to render. Get your own portfolio and join cg market.



scene 05 camera 1



Software and models © 2013 EVERMOTION. EVERMOTION logo is trademark or registered trademark of Evermotion Inc. in the U.S. and/or other countries. All rights reserved. All *.max and bitmaps models included on this DVDROM with data are an integral part of „archexteriors vol.18” and the resale of this data is strictly prohibited. All models can be used for commercial purposes only by owners who bought this DVDROM. The sharing of DVDROM data is strictly prohibited unless that user has written authorizati on from EVERMOTION.

archexteriors

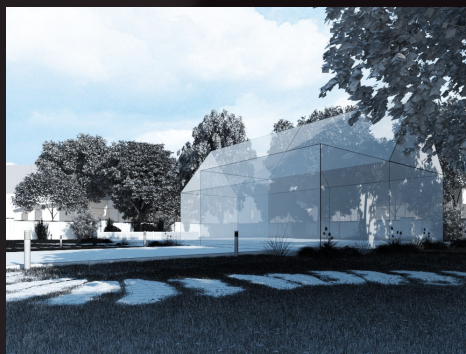
2013



Have you ever wanted to make professional exterior renderings? Do you know how to use V-RaySun, V-RaySky and V-RayPhysicalCamera? Have you ever had problems with composition? Archexteriors will end all your problems. Take a look at this 10 fully textured scenes with professional shaders and lighting ready to render. Get your own portfolio and join cg market.



scene 05 camera 2



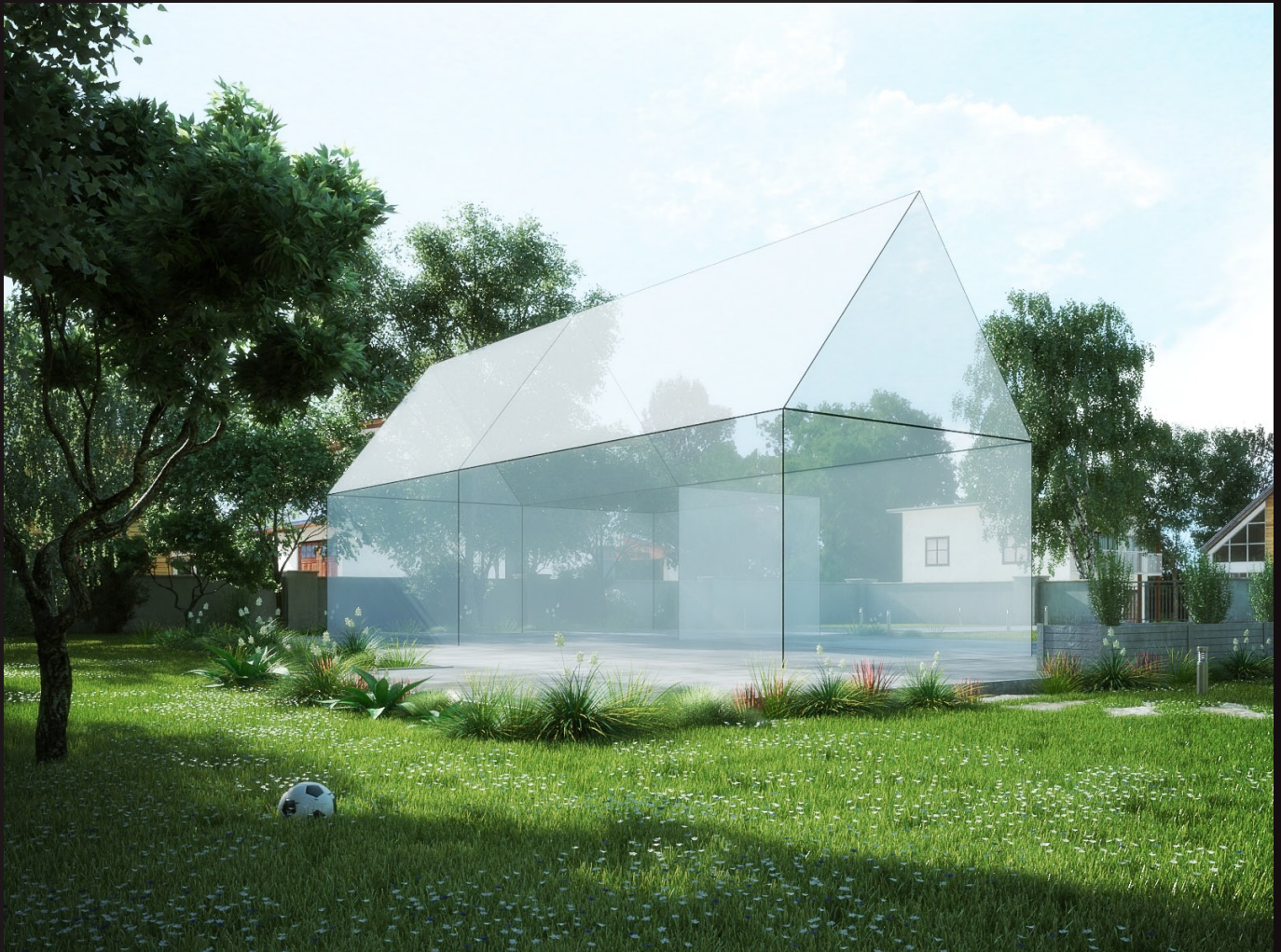
Software and models © 2013 EVERMOTION. EVERMOTION logo is trademark or registered trademark of Evermotion Inc. in the U.S. and/or other countries. All rights reserved. All *.max and bitmaps models included on this DVDROM with data are an integral part of „archexteriors vol.18” and the resale of this data is strictly prohibited. All models can be used for commercial purposes only by owners who bought this DVDROM. The sharing of DVDROM data is strictly prohibited unless that user has written authorizati on from EVERMOTION.

archexteriors

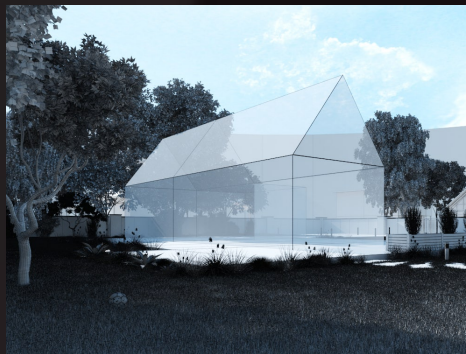
2013



Have you ever wanted to make professional exterior renderings? Do you know how to use V-RaySun, V-RaySky and V-RayPhysicalCamera? Have you ever had problems with composition? Archexteriors will end all your problems. Take a look at this 10 fully textured scenes with professional shaders and lighting ready to render. Get your own portfolio and join cg market.



scene 05 camera 3



Software and models © 2013 EVERMOTION. EVERMOTION logo is trademark or registered trademark of Evermotion Inc. in the U.S. and/or other countries. All rights reserved. All *.max and bitmaps models included on this DVDROM with data are an integral part of „archexteriors vol.18” and the resale of this data is strictly prohibited. All models can be used for commercial purposes only by owners who bought this DVDROM. The sharing of DVDROM data is strictly prohibited unless that user has written authorizati on from EVERMOTION.

archexteriors

2013



Have you ever wanted to make professional exterior renderings? Do you know how to use V-RaySun, V-RaySky and V-RayPhysicalCamera? Have you ever had problems with composition? Archexteriors will end all your problems. Take a look at this 10 fully textured scenes with professional shaders and lighting ready to render. Get your own portfolio and join cg market.



scene 06 camera 01



Software and models © 2013 EVERMOTION. EVERMOTION logo is trademark or registered trademark of Evermotion Inc. in the U.S. and/or other countries. All rights reserved. All *.max and bitmaps models included on this DVDROM with data are an integral part of „archexteriors vol.18” and the resale of this data is strictly prohibited. All models can be used for commercial purposes only by owners who bought this DVDROM. The sharing of DVDROM data is strictly prohibited unless that user has written authorizati on from EVERMOTION.

archexteriors

2013



Have you ever wanted to make professional exterior renderings? Do you know how to use V-RaySun, V-RaySky and V-RayPhysicalCamera? Have you ever had problems with composition? Archexteriors will end all your problems. Take a look at this 10 fully textured scenes with professional shaders and lighting ready to render. Get your own portfolio and join cg market.



scene 06 camera 2



Software and models © 2013 EVERMOTION. EVERMOTION logo is trademark or registered trademark of Evermotion Inc. in the U.S. and/or other countries. All rights reserved. All *.max and bitmaps models included on this DVDROM with data are an integral part of „archexteriors vol.18” and the resale of this data is strictly prohibited. All models can be used for commercial purposes only by owners who bought this DVDROM. The sharing of DVDROM data is strictly prohibited unless that user has written authorizati on from EVERMOTION.

archexteriors

2013



Have you ever wanted to make professional exterior renderings? Do you know how to use V-RaySun, V-RaySky and V-RayPhysicalCamera? Have you ever had problems with composition? Archexteriors will end all your problems. Take a look at this 10 fully textured scenes with professional shaders and lighting ready to render. Get your own portfolio and join cg market.



scene 06 camera 3



Software and models © 2013 EVERMOTION. EVERMOTION logo is trademark or registered trademark of Evermotion Inc. in the U.S. and/or other countries. All rights reserved. All *.max and bitmaps models included on this DVDROM with data are an integral part of „archexteriors vol.18” and the resale of this data is strictly prohibited. All models can be used for commercial purposes only by owners who bought this DVDROM. The sharing of DVDROM data is strictly prohibited unless that user has written authorizati on from EVERMOTION.

archexteriors

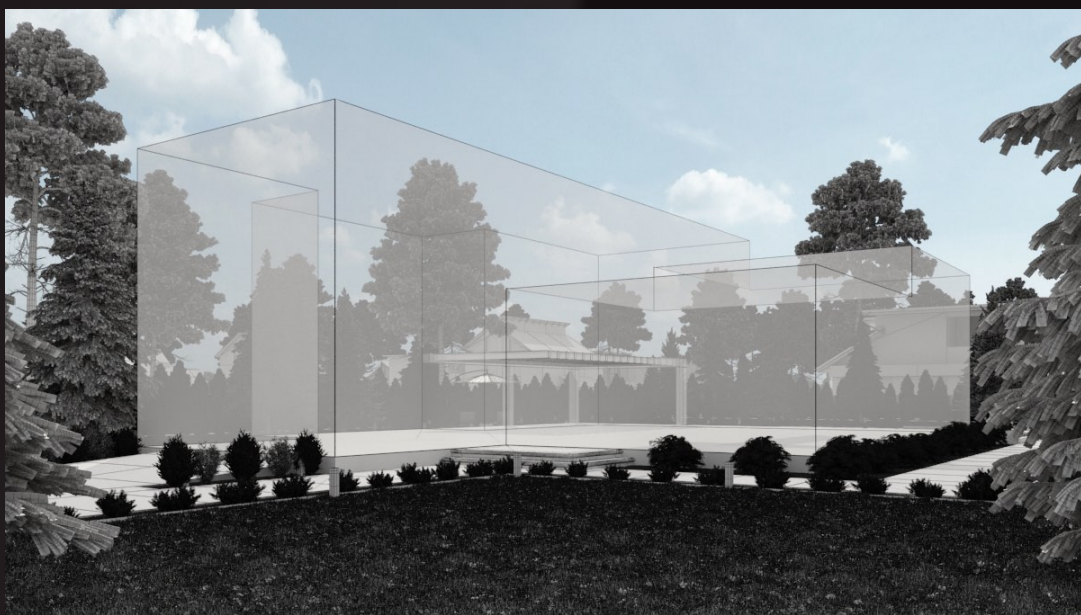
2013



Have you ever wanted to make professional exterior renderings? Do you know how to use V-RaySun, V-RaySky and V-RayPhysicalCamera? Have you ever had problems with composition? Archexteriors will end all your problems. Take a look at this 10 fully textured scenes with professional shaders and lighting ready to render. Get your own portfolio and join cg market.



scene 07 camera 1



Software and models © 2013 EVERMOTION. EVERMOTION logo is trademark or registered trademark of Evermotion Inc. in the U.S. and/or other countries. All rights reserved. All *.max and bitmaps models included on this DVDROM with data are an integral part of „archexteriors vol.18” and the resale of this data is strictly prohibited. All models can be used for commercial purposes only by owners who bought this DVDROM. The sharing of DVDROM data is strictly prohibited unless that user has written authorizati on from EVERMOTION.

archexteriors

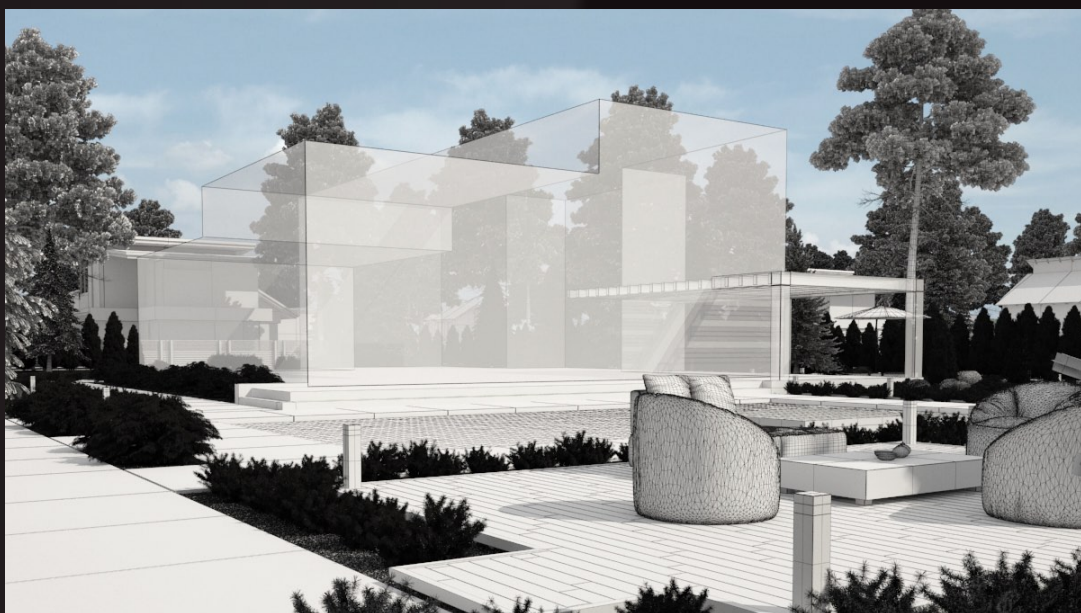
2013



Have you ever wanted to make professional exterior renderings? Do you know how to use V-RaySun, V-RaySky and V-RayPhysicalCamera? Have you ever had problems with composition? Archexteriors will end all your problems. Take a look at this 10 fully textured scenes with professional shaders and lighting ready to render. Get your own portfolio and join cg market.



scene 07 camera 2



Software and models © 2013 EVERMOTION. EVERMOTION logo is trademark or registered trademark of Evermotion Inc. in the U.S. and/or other countries. All rights reserved. All *.max and bitmaps models included on this DVDROM with data are an integral part of „archexteriors vol.18” and the resale of this data is strictly prohibited. All models can be used for commercial purposes only by owners who bought this DVDROM. The sharing of DVDROM data is strictly prohibited unless that user has written authorizati on from EVERMOTION.

archexteriors

2013



Have you ever wanted to make professional exterior renderings? Do you know how to use V-RaySun, V-RaySky and V-RayPhysicalCamera? Have you ever had problems with composition? Archexteriors will end all your problems. Take a look at this 10 fully textured scenes with professional shaders and lighting ready to render. Get your own portfolio and join cg market.



scene 07 camera 3



Software and models © 2013 EVERMOTION. EVERMOTION logo is trademark or registered trademark of Evermotion Inc. in the U.S. and/or other countries. All rights reserved. All *.max and bitmaps models included on this DVDROM with data are an integral part of „archexteriors vol.18” and the resale of this data is strictly prohibited. All models can be used for commercial purposes only by owners who bought this DVDROM. The sharing of DVDROM data is strictly prohibited unless that user has written authorizati on from EVERMOTION.

archexteriors

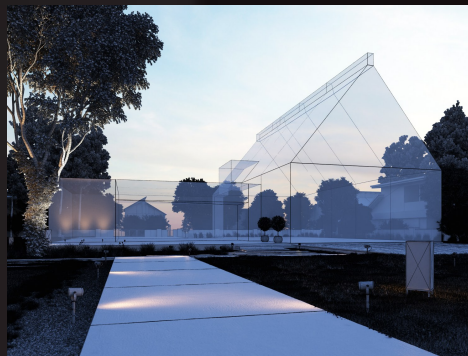
2013



Have you ever wanted to make professional exterior renderings? Do you know how to use V-RaySun, V-RaySky and V-RayPhysicalCamera? Have you ever had problems with composition? Archexteriors will end all your problems. Take a look at this 10 fully textured scenes with professional shaders and lighting ready to render. Get your own portfolio and join cg market.



scene 08 camera 1



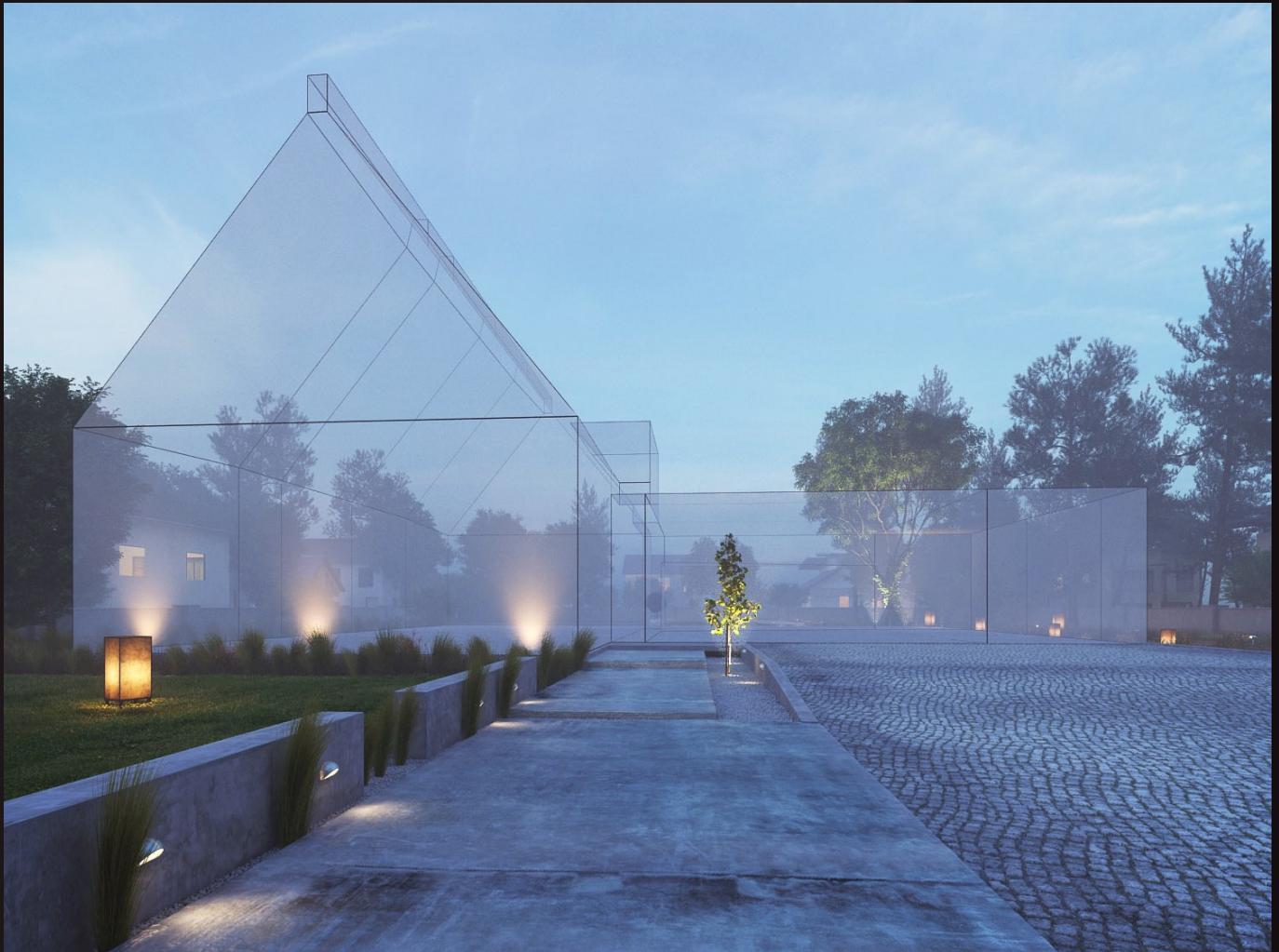
Software and models © 2013 EVERMOTION. EVERMOTION logo is trademark or registered trademark of Evermotion Inc. in the U.S. and/or other countries. All rights reserved. All *.max and bitmaps models included on this DVDROM with data are an integral part of „archexteriors vol.18” and the resale of this data is strictly prohibited. All models can be used for commercial purposes only by owners who bought this DVDROM. The sharing of DVDROM data is strictly prohibited unless that user has written authorizati on from EVERMOTION.

archexteriors

2013



Have you ever wanted to make professional exterior renderings? Do you know how to use V-RaySun, V-RaySky and V-RayPhysicalCamera? Have you ever had problems with composition? Archexteriors will end all your problems. Take a look at this 10 fully textured scenes with professional shaders and lighting ready to render. Get your own portfolio and join cg market.



scene 08 camera 2



Software and models © 2013 EVERMOTION. EVERMOTION logo is trademark or registered trademark of Evermotion Inc. in the U.S. and/or other countries. All rights reserved. All *.max and bitmaps models included on this DVDROM with data are an integral part of „archexteriors vol.18” and the resale of this data is strictly prohibited. All models can be used for commercial purposes only by owners who bought this DVDROM. The sharing of DVDROM data is strictly prohibited unless that user has written authorizati on from EVERMOTION.

archexteriors

2013



Have you ever wanted to make professional exterior renderings? Do you know how to use V-RaySun, V-RaySky and V-RayPhysicalCamera? Have you ever had problems with composition? Archexteriors will end all your problems. Take a look at this 10 fully textured scenes with professional shaders and lighting ready to render. Get your own portfolio and join cg market.



scene 08 camera 3



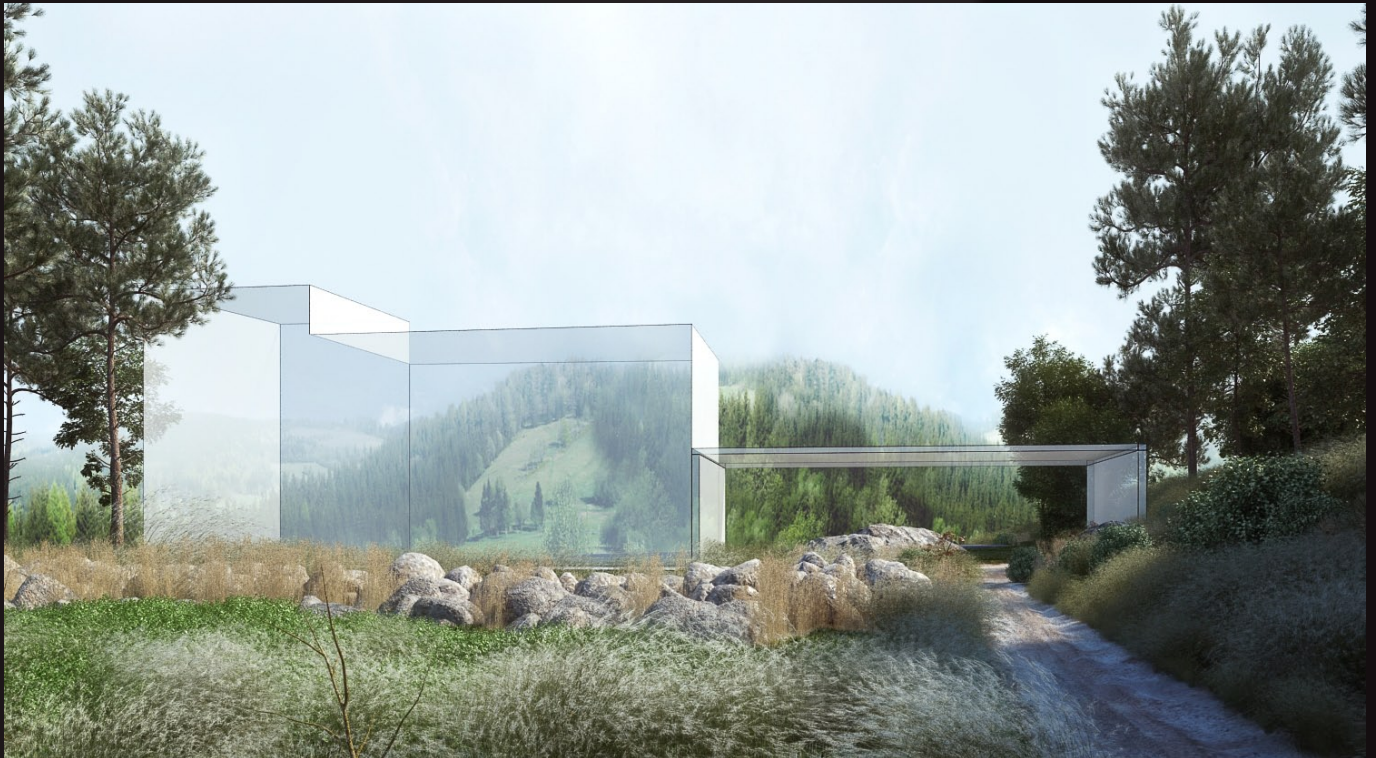
Software and models © 2013 EVERMOTION. EVERMOTION logo is trademark or registered trademark of Evermotion Inc. in the U.S. and/or other countries. All rights reserved. All *.max and bitmaps models included on this DVDROM with data are an integral part of „archexteriors vol.18” and the resale of this data is strictly prohibited. All models can be used for commercial purposes only by owners who bought this DVDROM. The sharing of DVDROM data is strictly prohibited unless that user has written authorizati on from EVERMOTION.

archexteriors

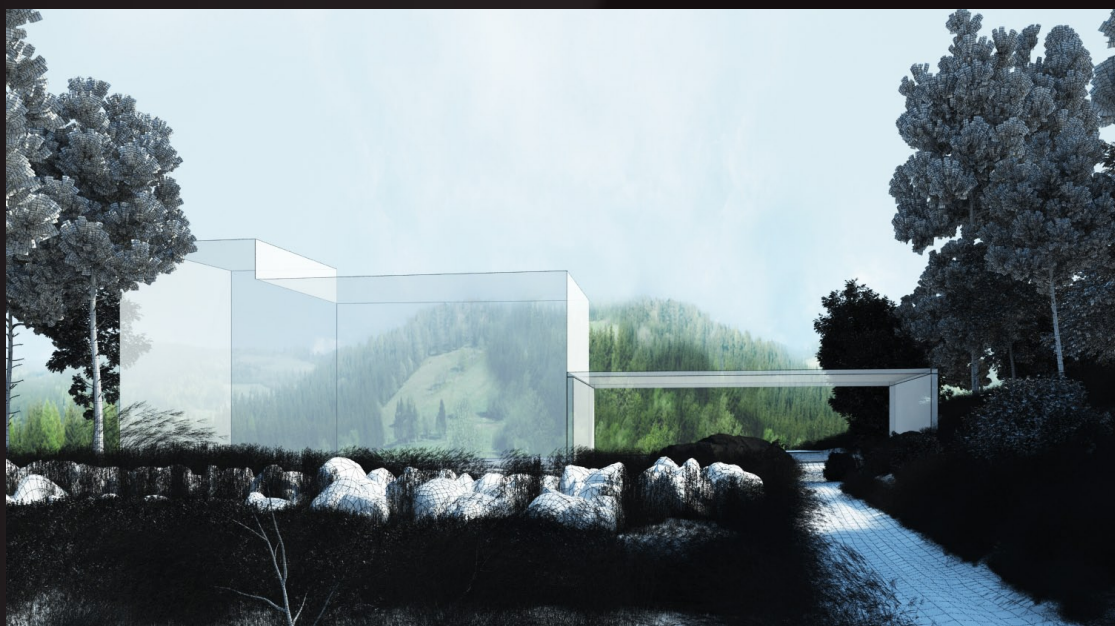
2013



Have you ever wanted to make professional exterior renderings? Do you know how to use V-RaySun, V-RaySky and V-RayPhysicalCamera? Have you ever had problems with composition? Archexteriors will end all your problems. Take a look at this 10 fully textured scenes with professional shaders and lighting ready to render. Get your own portfolio and join cg market.



scene 09 camera 1



Software and models © 2013 EVERMOTION. EVERMOTION logo is trademark or registered trademark of Evermotion Inc. in the U.S. and/or other countries. All rights reserved. All *.max and bitmaps models included on this DVDROM with data are an integral part of „archexteriors vol.18” and the resale of this data is strictly prohibited. All models can be used for commercial purposes only by owners who bought this DVDROM. The sharing of DVDROM data is strictly prohibited unless that user has written authorizati on from EVERMOTION.

archexteriors

2013



Have you ever wanted to make professional exterior renderings? Do you know how to use V-RaySun, V-RaySky and V-RayPhysicalCamera? Have you ever had problems with composition? Archexteriors will end all your problems. Take a look at this 10 fully textured scenes with professional shaders and lighting ready to render. Get your own portfolio and join cg market.



scene 09 camera 2



Software and models © 2013 EVERMOTION. EVERMOTION logo is trademark or registered trademark of Evermotion Inc. in the U.S. and/or other countries. All rights reserved. All *.max and bitmaps models included on this DVDROM with data are an integral part of „archexteriors vol.18” and the resale of this data is strictly prohibited. All models can be used for commercial purposes only by owners who bought this DVDROM. The sharing of DVDROM data is strictly prohibited unless that user has written authorizati on from EVERMOTION.

archexteriors

2013



Have you ever wanted to make professional exterior renderings? Do you know how to use V-RaySun, V-RaySky and V-RayPhysicalCamera? Have you ever had problems with composition? Archexteriors will end all your problems. Take a look at this 10 fully textured scenes with professional shaders and lighting ready to render. Get your own portfolio and join cg market.



scene 09 camera 3



Software and models © 2013 EVERMOTION. EVERMOTION logo is trademark or registered trademark of Evermotion Inc. in the U.S. and/or other countries. All rights reserved. All *.max and bitmaps models included on this DVDROM with data are an integral part of „archexteriors vol.18” and the resale of this data is strictly prohibited. All models can be used for commercial purposes only by owners who bought this DVDROM. The sharing of DVDROM data is strictly prohibited unless that user has written authorizati on from EVERMOTION.

archexteriors

2013



Have you ever wanted to make professional exterior renderings? Do you know how to use V-RaySun, V-RaySky and V-RayPhysicalCamera? Have you ever had problems with composition? Archexteriors will end all your problems. Take a look at this 10 fully textured scenes with professional shaders and lighting ready to render. Get your own portfolio and join cg market.



scene 10 camera 1



Software and models © 2013 EVERMOTION. EVERMOTION logo is trademark or registered trademark of Evermotion Inc. in the U.S. and/or other countries. All rights reserved. All *.max and bitmaps models included on this DVDROM with data are an integral part of „archexteriors vol.18” and the resale of this data is strictly prohibited. All models can be used for commercial purposes only by owners who bought this DVDROM. The sharing of DVDROM data is strictly prohibited unless that user has written authorizati on from EVERMOTION.

archexteriors

2013



Have you ever wanted to make professional exterior renderings? Do you know how to use V-RaySun, V-RaySky and V-RayPhysicalCamera? Have you ever had problems with composition? Archexteriors will end all your problems. Take a look at this 10 fully textured scenes with professional shaders and lighting ready to render. Get your own portfolio and join cg market.



scene 10 camera 2



Software and models © 2013 EVERMOTION. EVERMOTION logo is trademark or registered trademark of Evermotion Inc. in the U.S. and/or other countries. All rights reserved. All *.max and bitmaps models included on this DVDROM with data are an integral part of „archexteriors vol.18” and the resale of this data is strictly prohibited. All models can be used for commercial purposes only by owners who bought this DVDROM. The sharing of DVDROM data is strictly prohibited unless that user has written authorizati on from EVERMOTION.

archexteriors

2013



Have you ever wanted to make professional exterior renderings? Do you know how to use V-RaySun, V-RaySky and V-RayPhysicalCamera? Have you ever had problems with composition? Archexteriors will end all your problems. Take a look at this 10 fully textured scenes with professional shaders and lighting ready to render. Get your own portfolio and join cg market.



scene 10 camera 3



Software and models © 2013 EVERMOTION. EVERMOTION logo is trademark or registered trademark of Evermotion Inc. in the U.S. and/or other countries. All rights reserved. All *.max and bitmaps models included on this DVDROM with data are an integral part of „archexteriors vol.18” and the resale of this data is strictly prohibited. All models can be used for commercial purposes only by owners who bought this DVDROM. The sharing of DVDROM data is strictly prohibited unless that user has written authorizati on from EVERMOTION.